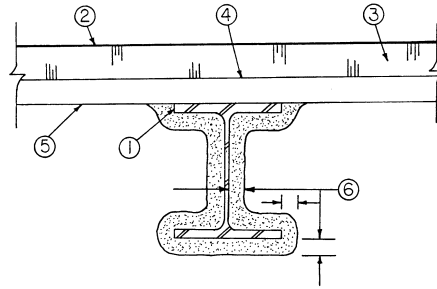


Design No. S720

Restrained Beam Ratings — 1, 1-1/2, 2 or 3 Hr (See Item 6)
 Unrestrained Beam Ratings — 1, 1-1/2, 2 or 3 Hr (See Item 6)
 Load Restricted for Canadian Applications — See Guide BXUV7



1. **Steel Beam** — W8X28 min size.
2. **Roof Covering*** — Consisting of hot mopped, cold application or single-ply materials, compatible with insulation(s) described herein which provide Class A, B or C coverings. See Roofing Materials and Systems Directory-Roof Covering Materials (TEVT).
3. **Roof Insulation*** — Mineral and fiber boards, applied in one or more layers. When multiple layers are used, end and side joints shall be offset a min of 12 in. in both directions in order to lap all joints. See **Mineral and Fiber Boards** (CERZ) category in the Fire Resistance Directory for names of manufacturers. Roof insulation shall be compatible with Roof Covering (Item 2). See Roofing Materials and Systems Directory-Roof Covering Materials (TEVT).
4. **Adhesive*** — Applied to crests of roof deck units and/or insulation in 1/2 in. wide ribbons at 0.4 gal per 100 sq ft. See Adhesives (BYWR) category for names of companies which can supply adhesive.
5. **Steel Roof Deck** — (Unclassified) — Fluted, No. 22 MSG, galv, 1-1/2 in. deep with 3-1/2 in. wide flutes spaced 6 in. OC. Ends overlapped 1-1/2 min, at supports and welded 12 in. OC to supports. Adjacent units welded or button punched together 18 in. OC max.
6. **Spray-Applied Fire Resistive Materials*** — See table below for appropriate thicknesses. Prepared by mixing with water and spray or trowel applied in one or more coats to beam surfaces which must be clean and free of dirt, loose scale and oil. Flute areas above the beam shall be filled with Spray-Applied Fire Resistive Materials. Min average density of 38 pcf with min individual density of 35 pcf for Type 800. Min avg density of 44 pcf with min ind value of 40 pcf for Type M-II. Min avg density of 44 pcf with min ind value of 42 pcf for Type TG. For method of density determination, see Design Information Section, Sprayed Material.

Restrained & Unrestrained Beam Rating Hr	Min Thkns In.
1	9/16
1-1/2	15/16
2	1-5/8
3	2-9/16

ISOLATEK INTERNATIONAL —Types 800, M-II or TG investigated for exterior use.

NEWKEM PRODUCTS CORP —Types M-II or TG investigated for exterior use.

LUCKY CORE INSULATING MATERIALS

MANUFACTURING L L C —M-II or TG investigated for exterior use.

*Bearing the UL Classification Mark