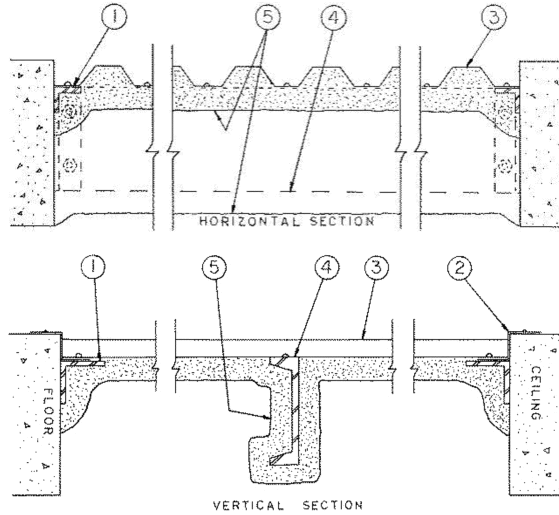


Design No. U706
 Exposed to Fire on Cementitious Face Only
 Nonbearing Wall Ratings — 1, 1-1/2, 2 or 3 Hr (See Item 5)



1. **Supporting Angles** — 3-3/8 by 3-3/8 by 1/4 in. steel angles placed along top and bottom of wall, attached to masonry with 1/4 in. diam by 1-1/2 in. long nailable fasteners with lead plugs spaced 24 in. OC; 2 by 2 by 3/16 in. steel angles placed along sides of assembly, attached to masonry expansion shields spaced 5 ft OC.
2. **Flashing Angles** — Min No. 24 MSG galv steel formed into a Z profile with 1 and 1-1/2 in. legs and 2 in. web, located along top and bottom of wall, 1-1/2 in. leg attached to facing units. Angles attached to masonry with 1/4 in. diam by 1-1/2 in. long nailable fastener with lead plugs spaced 40 in. OC.
3. **Facing Units** — Min 0.020 in. thick (26 MSG) galv steel facing units with 1-1/2 in. deep flutes 6 in. OC. Panels fastened to support angles and reinforcing channel through flashing angles with 1/4 in. diam by 3/4 in. long self-tapping steel screws located in every flute in the horizontal direction.
4. **Reinforcing Channel** — C8 x 11.5 cold-rolled steel channel spaced 5 ft OC, attached to 2 by 2 by 3/16 in. steel angle with two 1/4 in. diam by 11/2 in. long bolts and nuts at each end. The angles were attached to side of masonry by two 5/16 in. diam by 2 1/2 in. long steel lag bolts with steel expansion shields at each end.
5. **Spray-Applied Fire Resistive Materials*** — Prepared by mixing with water according to instructions on each bag of material and applied to reinforcing channel and one side of the wall, which must be free of dirt, oil or loose scale, to final thicknesses shown on the table below. Min avg and min ind density of 15 pcf for the Types 304 and 404. For method of density determination, refer to the General Design Information Section.

Classification	Facing Unit	Mtl Thkns In.	Reinforcing Channel
Hr			
1	1-5/8		1-1/8
1-1/2	2-5/16		1-3/8
2	2-11/16		1-5/8
3	3-1/16		2-1/8

ISOLATEK INTERNATIONAL —Types 304 and 404

*Bearing the UL Classification Mark